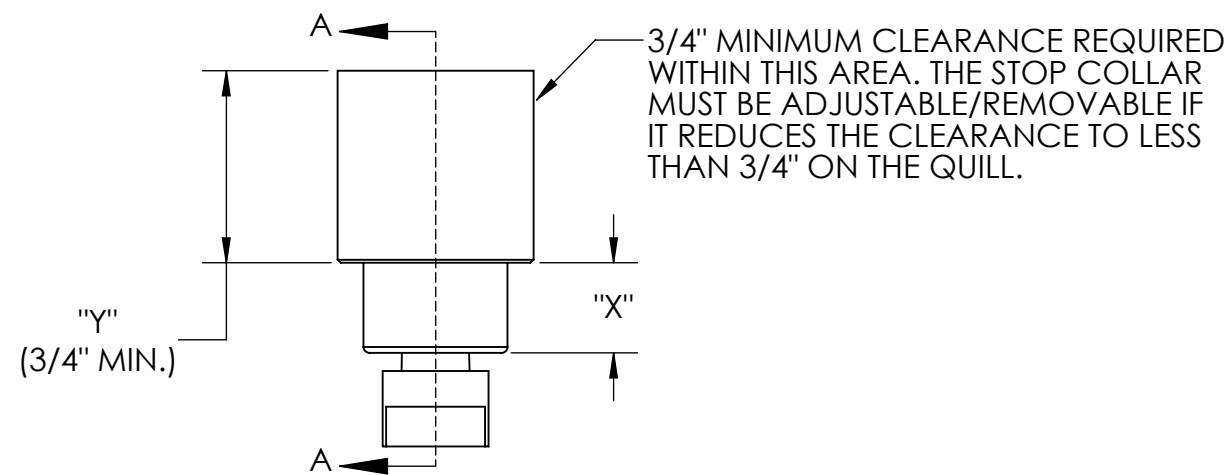
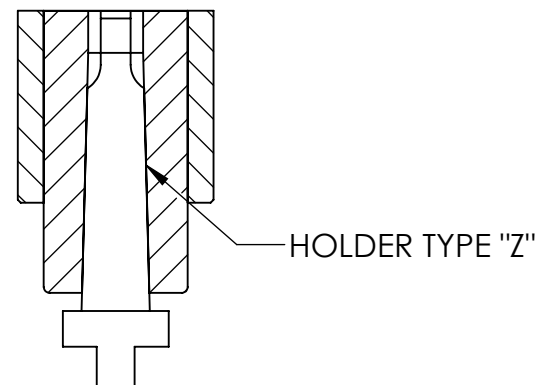


REVISIONS

REV.	DESCRIPTION	DATE	APPROVED
1	INITIAL RELEASE	12/28/20	WSH

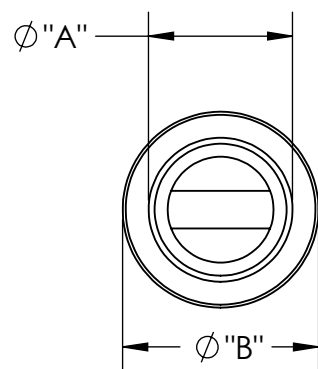


3/4" MINIMUM CLEARANCE REQUIRED WITHIN THIS AREA. THE STOP COLLAR MUST BE ADJUSTABLE/REMOVABLE IF IT REDUCES THE CLEARANCE TO LESS THAN 3/4" ON THE QUILL.



SECTION A-A

DRILL PRESS SPECIFICATIONS	
DIM "X"	
DIM "Y"	
HOLDER TYPE "Z"	
DIM Ø"A"	
DIM Ø"B"	



NOTES:

1. AT LEAST 3/4" OF CLEARANCE IS REQUIRED AT DIMENSION "Y" ON THE NON-ROTATING PORTION OF THE QUILL FOR ATTACHING THE MULTI-SPINDLE HEAD.
2. HOLDER TYPE IS FREQUENTLY, BUT NOT ALWAYS, A #2 MORSE TAPER, AN R-8 TAPER, ETC. OFTEN COMBINED WITH A JACOBS TAPER FOR THE KEY CHUCK.
3. THESE SPECIFICATIONS MUST BE COMPLETED AND SUBMITTED BY THE CUSTOMER BEFORE AN ORDER CAN BE PLACED.

UNLESS OTHERWISE SPECIFIED:		NAME	DATE	MENDENHALL INDUSTRIES
DIMENSIONS ARE IN INCHES		WSH	12/28/20	
TOLERANCES:				<i>Blackalloy</i> COMPANY OF AMERICA
FRACTIONAL ± .015				
ANGULAR ± 1/2°				TITLE:
TWO PLACE DECIMAL ± .015				DRILL PRESS SPECIFICATIONS
THREE PLACE DECIMAL ± .005				FOR MULTI-SPINDLE HEAD
SURFACE FINISH 125 RMS				SIZE B
BREAK ALL SHARP EDGES				DWG. NO.
INTERPRET GEOMETRIC TOLERANCING PER: ASME Y14.5-2009				REV 1
MATERIAL AS NOTED				SCALE: 1:2
FINISH AS NOTED				WEIGHT:
DO NOT SCALE DRAWING				SHEET 1 OF 1

PROPRIETARY AND CONFIDENTIAL
 THE INFORMATION CONTAINED IN THIS DRAWING IS THE SOLE PROPERTY OF MENDENHALL INDUSTRIES CORP. ANY REPRODUCTION IN PART OR AS A WHOLE WITHOUT THE WRITTEN PERMISSION OF MENDENHALL INDUSTRIES CORP. IS PROHIBITED.